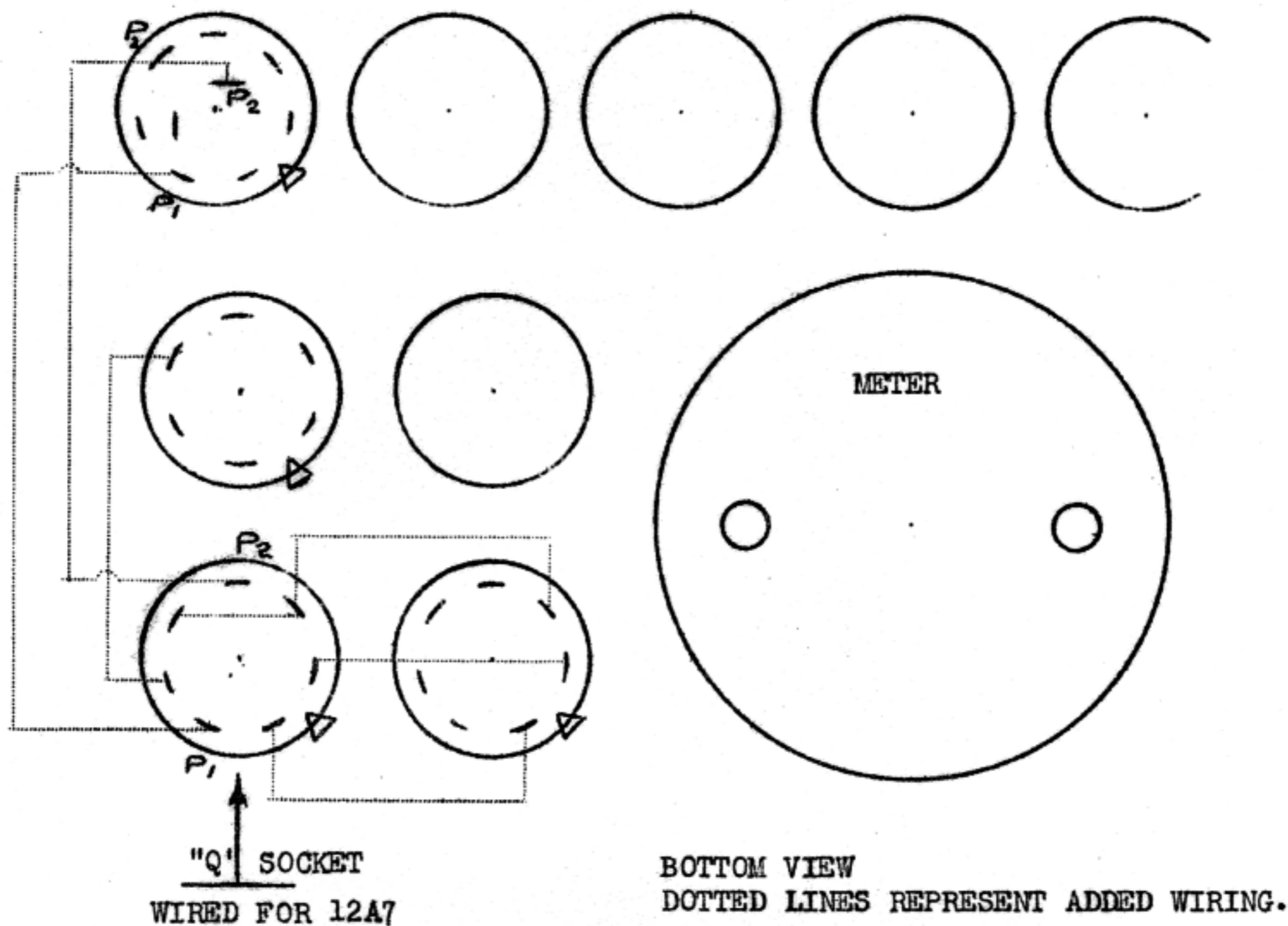




DIAMOND POINT JR.-34  
 ADDED WIRING FOR TESTING 12A7 TUBE



TESTING 12A7 TUBE ON DIAMOND POINT JR.

- (1.) Pentode Section:- Insert tube in Socket "Q".  
 Set filament at 12.6 volts.  
 Set Left potentiometer at 42.  
 Press No. 1 Rectifier button, adjust to diamond.  
 Hold down No. 1 Rectifier button and press Green  
 button for element performance.
- (2.) Rectifier Section:- Insert tube in Socket "Q".  
 Set filament at 12.6 volts.  
 Set Left potentiometer at 76.  
 Press No. 2 Rectifier button for element performance.

**This Document Provided Free**

**At**

**[www.StevenJohnson.com](http://www.StevenJohnson.com)**

**NOT FOR RESALE**